

A man with a beard, wearing a black beanie, reflective sunglasses, and a brown Carhartt work suit, is operating a snowblower in a snowy environment. The Carhartt logo is visible on the chest of his jacket. The background shows a clear blue sky and some evergreen trees.

**2023  
FALL  
LINEUP**



**FAMILY  
Farm & Home**

## TABLE OF CONTENTS

Pellet Stoves	4
Wood Burning Stoves	5
Bagged Fuel & Stove Installation Kits	6
Forced Air & Garage Heaters	7
Small Space & Wall Mount Heaters	8
Portable Heat	9
Generators	10
DeWalt® Cordless Power Tools	11
Husqvarna® Chain Saws	12
Husqvarna® Blowers	13
Echo® Chain Saws, Blowers & Trimmers	14
Logging	15
Yard Clean Up	16
Snow Throwers	17
Storage	18
Trail Master® UTV, GoKart & Mini Bikes	19
Back 40® UTV	20
ATV/UTV Accessories	21
Food Plot	22
Deer Supplements & Trail Cameras	23
Hunting Blinds & Stands	24
LEM® Food Processing	25
Whitetail® Hunting Accessories & Gun Safes	26-27
Summit® Tractors	28-29
Tarter® Tractor Implements	30-31
Livestock De-Icing & Feeders	32
Fencing & Gates	33

## FEATURED HEATING BRANDS



Ashley  
usstove.com



Cleveland Iron Works  
cleveland-ironworks.com



Diamond Hearths  
diamondhearths.com



DuraVent®  
duravent.com



Fire Chief®  
firechiefwoodfurnace.com



Mr. Heater®  
mrheater.com



Pelpro®  
pelprostoves.com



US Stove®  
usstove.com



VisionAir™  
visionairproducts.com

## Carhartt® Workwear

Check out our complete line of Carhartt® Workwear, including performance tees, work pants and insulated outerwear.





**FAMILY  
Farm & Home**  
Live. Work. Grow.

1234 5678 9012 3456

CARDHOLDER NAME

**THE CARD  
THAT VALUES  
A HARD DAY'S  
WORK JUST AS  
MUCH AS YOU DO.**



**HOMEGROWN REWARDS®  
MEMBERS EARN**

**5% BACK**  
IN HOMEGROWN REWARDS™

**OR**

**HOMEGROWN REWARDS®  
MEMBERS TAKE ADVANTAGE OF**

**SPECIAL  
FINANCING**  
ON QUALIFYING PURCHASES

\*Subject to credit approval. To earn rewards, Family Farm & Home Credit Cardholders must be enrolled in Homegrown Rewards®. Enrolled Family Farm & Home Credit Cardholders earn 25 Homegrown Rewards® points per dollar spent in store. Receive a \$5 rewards certificate for every 2,500 points earned; this is a \$5 rewards certificate for every \$100 spent in store (i.e. 5% Back). Rewards are not earned on Special Financing purchases. Family Farm & Home reserves the right to change or cancel the terms and conditions of the Homegrown Rewards® program and any associated offer(s) at any time without prior notification. See Homegrown Rewards® Terms & Conditions or details at <https://rewards.familyfarmandhome.com/Homegrown/terms.do>.

†Special Financing Offers Available for Family Farm & Home Credit Cardholder.

No Interest if paid in full within 12 Months (offer available in store only) On purchases of \$399-\$998.99 made with your Family Farm & Home credit card. Interest will be charged to your account from the purchase date if the promotional balance is not paid in full within 12 Months. Minimum monthly payments required.

Qualifying purchase amount must be on one receipt. Discounts may result in the qualifying purchase amount not being satisfied. Excludes gift cards. No interest will be charged on the promo balance if you pay it off, in full, within the promo period. If you do not, interest will be charged on the promo balance from the purchase date. The required minimum monthly payments may or may not pay off the promo balance before the end of the promo period, depending on purchase amount, promo length and payment allocation. Regular account terms apply to non-promo purchases and, after promo period ends, to the promo balance. For new accounts: purchase APR is 29.99%; Minimum interest charge is \$2. Existing cardholders: See your credit card agreement terms. Subject to credit approval. We reserve the right to discontinue or alter the terms of this offer any time.

No Interest for 24 Months (offer available in store only) On purchases of \$999-\$1,598.99 made with your Family Farm & Home credit card. \$100 Promotion Fee will be charged. 24 equal monthly payments required.

Qualifying purchase amount must be on one receipt. Discounts may result in the qualifying purchase amount not being satisfied. Excludes gift cards. A promo fee of \$100 will be charged and included in the promo purchase balance. No interest will be charged on promo purchase and equal monthly payments are required equal to initial promo purchase amount divided equally by the number of months in promo period until promo is paid in full. The equal monthly payment will be rounded to the next highest whole dollar and may be higher than the minimum payment that would be required if the purchase was a non-promotional purchase. Regular account terms apply to non-promotional purchases. For new accounts: Purchase APR is 29.99%; Minimum Interest Charge is \$2. Existing cardholders should see their credit card agreement for their applicable terms. Subject to credit approval. We reserve the right to discontinue or alter the terms of this offer any time.

No Interest for 36 Months (offer available in store only) On purchases of \$1,599 or more made with your Family Farm & Home credit card. \$150 Promotion Fee will be charged. 36 equal monthly payments required.

Qualifying purchase amount must be on one receipt. Discounts may result in the qualifying purchase amount not being satisfied. Excludes gift cards. A promo fee of \$150 will be charged and included in the promo purchase balance. No interest will be charged on promo purchase and equal monthly payments are required equal to initial promo purchase amount divided equally by the number of months in promo period until promo is paid in full. The equal monthly payment will be rounded to the next highest whole dollar and may be higher than the minimum payment that would be required if the purchase was a non-promotional purchase. Regular account terms apply to non-promotional purchases. For new accounts: Purchase APR is 29.99%; Minimum Interest Charge is \$2. Existing cardholders should see their credit card agreement for their applicable terms. Subject to credit approval. We reserve the right to discontinue or alter the terms of this offer any time.

**LIVE. WORK. GROW.**

**3**

# PELLET STOVES

**30%**   
**TAX CREDIT**

**TAX CREDIT ELIGIBLE ON ALL  
ACCESSORIES AND PROFESSIONAL INSTALLATION**



**CLICK TO  
LEARN  
MORE!**

## Pelpro® PP150™ Pellet Burning Stove

Heating output up to 49,200 BTU  
Heats up to 2,500 square feet  
265 CFM variable speed blower  
Automatic ignition and intuitive dial control  
150 lb. hopper capacity  
Includes fresh air kit  
#PP150-DS (844395)



### 200 lb. Hopper Extension

#PPE200 (532830)  
*Available by special order*

**30%**   
**TAX CREDIT**  
**ELIGIBLE**  
See store for details



## Cleveland Iron Works® WiFi Enabled Pellet Burning Stove

Heating output up to 25,000 BTU  
Heats up to 800 square feet  
18 lb. hopper capacity  
#F500215 (793555)

**30%**   
**TAX CREDIT**  
**ELIGIBLE**  
See store for details



**GREAT FOR SINGLE ROOMS,  
BASEMENTS AND CABINS**

**ADJUST HEAT SETTINGS FROM  
YOUR CELL PHONE WITH WIFI**

## Ashley® WiFi Pellet Stove

Heats up to 1,300 square feet  
50 lb. hopper capacity  
Up to 25 hours of continuous warmth  
Wireless remote  
#AP5613-W (881845)

**30%**   
**TAX CREDIT**  
**ELIGIBLE**  
See store for details



## Diamond Hearths® Hearth Pads

Choose from 40" or 48"  
Made in America to UL-1618 standards  
by skilled craftsmen



**Diamond Hearths**





# WOOD BURNING STOVES

## Fire Chief® FC1000E Furnace

Heating output up to 198,000 BTU  
Heats up to 2,000 square feet  
4.0 cu. ft. stainless steel lined firebox  
High capacity 1800 CFM blower  
EPA certified  
#FC1000E (700655)

**30% TAX CREDIT**  
**ELIGIBLE**  
See store for details



## Ashley® Plate Steel Wood Stove

Heating output up to 152,000 BTU  
Heats up to 3,200 square feet  
Accepts logs up to 22" in length  
EPA certified  
#AW3200E-P (793860)



## Ashley® Classic Wood Stove

Heating output up to 68,000 BTU  
Heats up to 1,200 square feet  
Accepts logs up to 18" in length  
EPA certified  
#AW1120E-P (739355)



## US Stove® Logwood Cabin Wood Stove

Heating output up to 54,000 BTU  
Heats up to 900 square feet  
Accepts logs up to 19" in length  
EPA certified  
#US1269E (739365)



## Caframo® Thermoelectric Stove Fan

**2-Blade**  
#800CAXBX (473230)  
**4-Blade**  
#812AMXBX (473225)



## US Stove® Ash Vacuum

2HP, 6 gallon capacity  
#AV15E (331605)



## 4' Deluxe Steel Log Rack

48"Hx48"Wx14"D #15203 (T627516)



**LIVE. WORK. GROW.**



# BAGGED FUEL & STOVE INSTALLATION KITS

## Wood Heating Fuel Pellets

Hardwood or softwood, 40 lbs.

(56416, 495215) Manufacturer may vary.

## Cherry Pit Fuel Pellets

40 lbs. (284500)

## Gren Heat®

### Cordwood Alternative

20 pack (398975)

## Duraflame®

### Firelogs

Six 4.5 lb. Logs (656305)

Four 4.5 lb. Crackleflame® Logs (656315)

### Firestart®

24 pack of firelighters (656310)

### Fatwood®

86.4 cu. in. (656320)

.125 cu. ft. (656325)



Grēn Heat

duraflame



## Bulk Fuel Discount

Purchase a skid of any heating fuel and save!



Kiln Dried Bundled Firewood  
(887725)



## Pellet and Wood Stove Installation

### Pellet Stove Installation Kit

#F500215 (481450)

### 6" Basic Through-the-Roof Stove Installation Kit

#6DP-KTUP (29295)

### 6" Basic Through-the-Wall Stove Installation Kit

#6DP-KOUT (129330)



DuraVent®

WE STOCK THE INDIVIDUAL DURAVENT® COMPONENTS NEEDED TO COMPLETE ANY INSTALLATION!

30%  
TAX CREDIT

ELIGIBLE  
See store for details

# FORCED AIR & GARAGE HEATERS

## Forced Air Kerosene or Propane Heaters

### Mr. Heater® Kerosene

80,000 BTU #F210180 (881915)  
 140,000 BTU #F210140 (881910)  
 185,000 BTU #F210185 (881920)

### Mr. Heater® Propane

60,000 BTU #F271370 (881945)  
 125,000 BTU #F271390 (881950)  
 170,000 BTU #F271400 (881955)



### Mr. Heater® Forced Air Heater

1,500/5,000 watt  
 120V  
 #F236120 (881930)



### VisionAir™ Ceiling Mount Utility Heater

3000/4000/5000 watt  
 #1VAHG5000 (881870)

6250/7500 watt  
 #1VAHG7500 (881885)



### Mr. Heater® Radiant Propane Heater

6,000/18,000 BTU  
 #F227500 (881925)



### DeWalt® Hybrid Propane Heater

68,000 BTU  
 #F3400661 (881960)



### Propane Tanks Empty tanks

5 lbs. (T496984)  
 20 lbs. (T497016)  
 30 lbs. (T497206)  
 40 lbs. (T657320)  
 100 lbs. (T657312)

### 46,000 BTU Patio Heater

#52156 (635085)



### Propane Bottle

16 oz. (T310326)

### 1-K Kerosene

2.5 gallons (96485)



LIVE. WORK. GROW.



# SMALL SPACE & WALL MOUNT HEATERS

## Small Space Heaters

VisionAir™

### Electric Heaters

7" Mini Personal Ceramic Heater  
#1VAHC7 (881890)

9" Fan Heater

700/1500 watt #1VAHW09 (881860)

10" Oscillating Ceramic Heater

700/1500 watt #1VAHC10 (881855)

15" Electric Utility Heater

1300/1500 watt #1VAHW152P (881850)

22" Oil-Filled Radiant Heater

600/900/1500 watt, ultra quiet  
#1VAHL22M (881865)



### VisionAir™ Infrared Heaters

13" 6-Tube Infrared Heater

#VAHQT13 (881875)

18" 6-Tube Infrared Heater

#1VAHQ18VWG,-GR (881880,895)



## Wall Mount Heaters

### Dual-Fuel Wall Mount Heater

### Propane Wall Mount Heaters

LP gas

Utilizes an attractive dancing blue flame to heat the surrounding air, creating a uniform, comfortable warm environment, built-in thermostat

30,000 BTU Radiant LP Heater #F299830 (652990)

30,000 BTU Blue Flame Heater #F299730 (652985)

### Mr. Heater® Wall Heater

### Blower Accessory

#F299201 (793720)





## Mr. Heater®

America's most popular brand of heaters – millions of consumers have enjoyed high quality comfortable heat with Mr. Heater®



### Mr. Heater®

#### Portable Propane Buddy Heater™ A

4,000–9,000 BTU, heats up to 225 square feet

#F232000 (489387)

Buddy Heater™ Carry Bag #F232078 (442540) B

#### Mr. Heater® Big Buddy™ Portable Heater C

18,000 BTU, heats up to 450 square feet

#F274805 (93465)

Big Buddy™ Carry Bag #F274889 (442545)



### Mr. Heater® Hunting Buddy™ D

Quiet electronic ignition, 6,000–12,000 BTU, heats up to 300 square feet, storage compartment for extra cylinder, gloves and accessories #F232035 (431500)



### Mr. Heater® Little Buddy™ Heater E

Up to 3,800 BTU, heats up to 95 square feet  
#F215100 (211500)



### Mr. Heater® Sunrize Tank Top Heater F

10,000 to 15,000 BTU/hr #F216500 (881935)

### Mr. Heater® 540°

#### Tank Top Heater G

29,000 to 45,000 BTU/hr  
#F242540 (881940)



### Coleman® Propane

16 oz. (T310326)



### Propane Adapter

Adapts 20 lb. tank to fill smaller propane bottles  
#F276172 (T874206)



### Mr. Heater®

#### Big Buddy™ Hose Tank

#### Quick Disconnect

12" #520-005HN (448095)



# GENERATORS

## 2500 Watt Starting/2200 Watt Running Portable Gas Powered Inverter Generator

13 hours at a 25% load - runs all night, 1.3 gallon fuel tank, includes CO sensor #iGen2500C (862595)



## 4500 Watt Starting/3700 Watt Running iGen4500 Dual Fuel Inverter Generator

Wireless electric start, TT-30R RV ready outlet, two 20amp household outlets, and built-in USB ports #iGen4500DF (748440)



## 12,500 Watt Starting/9500 Watt Running Dual Fuel Generator

50amp, 457cc OHV engine, 12 hour runtime, transfer switch ready, remote electric start #wGen9500DF (724675)



## 9500 Watt Starting/7500 Watt Running Dual Fuel Generator

420 cc, OHV engine with cast iron sleeve, automatic low-oil shutdown and digital hour meter, includes CO sensor #wGen7500DFC (865585)



**EXCLUSIVELY AT  
FAMILY FARM & HOME!**



**Westinghouse**



**SPECIAL  
FINANCING  
AVAILABLE\***

**HOMEOWNERS REWARDS\*  
MEMBERS EARN**

**5% BACK**

WITH THE FAMILY FARM & HOME® CREDIT CARD

**No Interest if paid in full within 12 Months** On purchases made every day of \$399-\$998.99 made with your Family Farm & Home credit card. Interest will be charged to your account from the purchase date if the promotional balance is not paid in full within 12 Months. Minimum monthly payments required. Qualifying purchase amount must be on one receipt. Discounts may result in the qualifying purchase amount not being satisfied. Excludes gift cards. No interest will be charged on the promo balance if you pay it off, in full, within the promo period. If you do not, interest will be charged on the promo balance from the purchase date. The required minimum monthly payments may or may not pay off the promo balance before the end of the promo period, depending on purchase amount, promo length and payment allocation. Regular account terms apply to non-promo purchases and, after promo period ends, to the promo balance. For new accounts: purchase APR is 29.99%. Minimum interest charge is \$2. Existing cardholders: See your credit card agreement terms. Subject to credit approval. We reserve the right to discontinue or alter the terms of this offer any time.



## Firman® 10,000 Peak/8000 Watt Running 50 AMP Dual Fuel Generator

439cc OHV engine, 8 gallon tank  
#H08051-53 (810975)



**FIRMAN**

# DEWALT® CORDLESS POWER TOOLS

20V Max  
Compact  
Brushless  
Drill & Impact  
Combo Kit

#DCK277C2  
(T249275)



20V Max  
Lithium-Ion  
Brushless  
Drill Driver Kit

#DCD777C2  
(T177476)



20V Max Brushless  
Impact Driver Kit

#DCF787C2 (T248962)

**DEWALT**



20V Max XR®  
Oscillating  
Tool Kit

#DCS356C1/D1  
(764265)



20V Max XR® High Torque  
1/2" Impact Wrench

#DCF900B (864965)



20V 7-1/4"  
Circular Saw

#DCS570B (T254335)



20V Max XR®  
Brushless 4.5" Grinder

#DCG413B (T254327)



6" Bench Grinder

#DW756 (T528539)



20V Reciprocating Saw

#DCS380B (T164690)



20V Max  
Lithium-Ion Grinder

#DCG412B (T164686)



20V Max  
Grease Gun

#DCGG571B (807700)



20V Max XR® Li-Ion  
6.0AH Battery 2 Pack

#DCB206-2 (784980)

**DEWALT**



**LIVE. WORK. GROW.**



# HUSQVARNA® CHAIN SAWS

## 2.1HP 16" Chain Saw **A**

41cc engine, X-Torq, Air Injection,  
Low Vib, Easy Start #435-16 (883735,215575)

## 1.9HP 16" Chain Saw **B**

38cc engine, X-Torq, Air Injection, Low Vib  
#240/120-16 (463680)

## 3.4HP 16" Chain Saw

50cc engine, X-Torq, Air Injection,  
Low Vib, AutoTune #545-16 (683990)

## 3.2HP 18" Rancher Chain Saw **C**

50cc engine, X-Torq, Air Injection,  
Low Vib, SmartStart #450-20 (883750, 771265)

16" Chain Saw #135 II (747425)

18" Chain Saw #440-18 (883740, 771270)

## 3.5HP 20" Rancher Chain Saw **D**

56cc engine, X-Torq, Air Injection,  
Low Vib, SmartStart #455R-20 (871715, 104450)

24" Chain Saw #460-24 (871720, 771275)

## 5.8HP Professional 20"

### 572XP® Chain Saw

71cc engine, X-Torq, Air Injection,  
Low Vib, SmartStart #572XP-20 (771280)

## 3.75HP 20" 550XP® Chain Saw **E**

50cc engine, X-Torq, Air Injection,  
Low Vib, SmartStart #550XP-20 (468795)

## 4.7HP 20" 562XP® Chain Saw

60cc engine, X-Torq, Air Injection,  
Low Vib, SmartStart #562XP-20 (520685)

14" Chain Saw #T540XP-14 (801110)

16" Chain Saw #T435-12 (801105)



## Husqvarna® Warranty

Extend the 2 year warranty on your new Husqvarna® chain saw to three years with the purchase of 6 bottles of Husqvarna® 2-cycle oil, or 5 years with the purchase of 96 oz. of pre-mixed fuel at the time of chain saw purchase. See store for details.

50:1 Fuel (404530)  
2-Cycle Oil (206220)





## Battery Powered Blower **A**

650 CFM, 136 MPH air volume, 8.4 lbs.  
#230IB (771235)



## 28cc 125B Blower **B**

425 CFM, 130 MPH air velocity, 9.4 lbs.  
#125B (158750)



## 28cc 125BVX Blower/Vac **C**

425 CFM, 131 MPH air velocity, 9.4 lbs.  
#125BVX (158755)



## 50cc 150BT Backpack Blower **C**

434 CFM, 251 MPH air volume, 22.5 lbs.  
#150BT (771245)



## 25cc Handheld Blower **D**

459 CFM, 157 MPH air volume, 9.5 lbs.  
#525BX (562690)



## 66cc 360BT Backpack Blower **E**

631 CFM, 232 MPH air volume, 23.2 lbs.  
#360BT (771240)



## 76cc 580BTS Backpack Blower **F**

908 CFM, 206 MPH air volume, 27 lbs.  
#580BTS (549800)



Husqvarna®

## VP® Racing Fuels



# ECHO® CHAIN SAWS, BLOWERS & TRIMMERS



## 14" Chain Saw **A**

30.5cc, 2-cycle engine #CS-310-14 (752720)

16" Chain Saw #CS-3510-16 (752725)

## 18" Chain Saw **B**

41.6cc, 2-cycle engine

#CS-4010-18 (879920, 752730)

## 20" Chain Saw **C**

59.8cc, 2-cycle engine #CS-590-20 (752735)

## 25.4cc Blower **D**

2-cycle engine, 453 cfm

#PB-2520AA (752700)

25.4cc HH Pro Blower

#PB-2620 (752705)

## 58.2cc Blower **E**

2-cycle engine, 517 cfm

#PB-580H (752710)

## 25.4cc Shred/Vac/Blower **F**

2-cycle engine, 392 cfm

#ES-250AA (752715)

## Curved Trimmer **G**

21.2cc, 2-cycle engine

#GT-225 (752580)

## High Torque Heavy Duty Straight Shaft Trimmer **H**

21.2cc, 2-cycle engine

#SRM-2320T (752590)

## Straight Trimmer **I**

25.4cc, 2-cycle engine

#SRM-266 (752595)



## Echo® Accessories

Replacement bars and chains,  
trimmer line, fuel, oil and more



## Lumber Jack® 37 Ton Log Splitter

Kohler® 277cc engine  
Horizontal or vertical operation  
Full beam  
14 second cycle time  
26" capacity  
16" DOT approved tires  
#YTL-590-609 (846280)



## Lumber Jack® 27 Ton Log Splitter

Briggs & Stratton® 208cc engine  
Horizontal or vertical operation  
Full beam  
12.4 second cycle time  
26" capacity  
16" DOT approved tires  
#YTL-590-593 (846275)



## Lumber Jack® 9 Ton Log Splitter

#YTL-590-616 (846285)



## Electric 5-Ton Log Splitter

15 amp electric motor  
#32229 (860995)



## Chipper Shredder

#33968 (860990)



# YARD CLEAN UP

## 44" Smart Sweep™

25 cu. ft. hopper capacity, off-set hitch allows you to sweep and mow at the same time, collapses for easy storage #45-0492(0456) (346100)



## 52" Lawn Sweeper

Easily and quickly attaches to all tractors, sweeper brush adjustment for every surface #45-0546 (675575)



**Agri-Fab**  
MADE IN  
USA  
WITH GLOBAL MATERIALS

## 42" Tow Behind Lawn Sweeper

Easy height adjustment and strong brushes make cleaning up your lawn easier than a rake #45-0320 (716990)



## 10 Cu. Ft. Dump Cart

750 lb. capacity  
#LDT1002B (486055, 877205)

**Precision**



## AgriFab® Mow-N-Vac

### Mow-N-Vac

32 cu. ft. capacity, deck adapter fits most popular tractor mower decks, durable vented hard top design reduces airborne dust #45-0577 (434640)

**Agri-Fab**

MADE IN  
USA  
WITH GLOBAL MATERIALS



# SNOW THROWERS

**Craftsman®**  
**21" Snow Thrower**  
 #31AS2M5E793 (879915)



**CRAFTSMAN.**



**Ariens®**  
**24" Snow Thrower**  
 24" depth #920025 (879910)



**Husqvarna®**  
**24" Snow Thrower**  
 24" depth  
 #ST124 (882370, 795665)



**Husqvarna® 27" Snow Thrower**  
 254cc engine, electric start  
 23" depth #ST227 (496720)



**Husqvarna®**  
**30" Snow Thrower**  
 291cc engine, electric start  
 23" depth #ST230P (533055)



**42" Tractor Snow Thrower**  
 Two 12" diameter serrated input  
 augers, 180° rotation, mounting and  
 pulley frame brackets included  
 #967343901 (192785)



**48" Tractor Snow Blade**  
 Blade angles left or right up to 30°  
 #588181302 (242055)



**Snow Blower Cab**  
 #490-241-0032  
 (322595)



**6' or 8' Quick Attach Snow Pusher**  
 #QASP6,8 (635165, 70)



**TARTER®**



**LIVE. WORK. GROW.**



# STORAGE

## Shelter Logic® 10'x20' Portable Garage Shelter

Heavy-duty powder coated steel frame, three layer rip stop polyethylene fabric, double zippered front door panel, four season protection #62680 (475395)



## Weather-Fast® 10'x20' Portable Garage Shelter

Heavy-duty powder coated 1-3/8" steel tubing frame, three layer rip stop polyethylene fabric, double zippered front door panel, four season protection #103-1105 (871095)



**SPECIAL  
FINANCING  
AVAILABLE\***

**HOME GROWN REWARDS®  
MEMBERS EARN  
5% BACK**  
WITH THE FAMILY FARM & HOME® CREDIT CARD

**No Interest if paid in full within 12 Months** On purchases made every day of \$399-\$998.99 made with your Family Farm & Home credit card. Interest will be charged to your account from the purchase date if the promotional balance is not paid in full within 12 Months. Minimum monthly payments required. Qualifying purchase amount must be on one receipt. Discounts may result in the qualifying purchase amount not being satisfied. Excludes gift cards. No interest will be charged on the promo balance if you pay it off in full, within the promo period. If you do not, interest will be charged on the promo balance from the purchase date. The required minimum monthly payments may or may not pay off the promo balance before the end of the promo period, depending on purchase amount, promo length and payment allocation. Regular account terms apply to non-promo purchases and, after promo period ends, to the promo balance. For new accounts: purchase APR is 29.99% Minimum interest charge is \$2. Existing cardholders: See your credit card agreement terms. Subject to credit approval. We reserve the right to discontinue or alter the terms of this offer any time.



**FAMILY Farm & Home**  
Live. Work. Grow.

1234 5678 9012 3456

CARDHOLDER NAME

## TrailMaster® Taurus™ 200 UTV

Assorted colors

with Back Seat #200GV (804150)

with Back Seat and Fuel Injection  
#200E-GV (866405)

with Dump Cart #200MFV (729110)

with Dump Cart and Fuel Injection  
#200E-U (866410)



## 196cc Mid XRX GoKart with Reverse

Electric start with recoil backup

rack and pinion steering

rear hydraulic disc brake

5-point harness

#MID XRX/R A  
(603800)



## MB200 Adult Mini Bike

Front and rear suspension, hydraulic rear  
brake and torque converter

#MB200 (637400, 881705,710) *Color may vary.*



## Storm 200™ Mini Bike

Rigid suspension and chain-clutch driven,

6.5 HP engine #MB200-1 (729120)



## Hurricane™ 200X Mini Bike

Torque Converter, front and rear hydraulic brakes,  
19" offroad tires, hydraulic suspension

(846690,695,700) *Color may vary.*

# BACK 40® UTV



## Back 40™ 400cc UTV

393cc 4-stroke single cylinder engine

Electronic fuel injection

2WD/4WD

Automatic CVT transmission

Locking differential

Dual A-arm suspension

4-wheel disc brakes

350 lb. cargo dump bed capacity

3,500 lb. winch

Thermoformed roof

Polycarbonate 2-piece windshield

Turn signals

Steel rims

#BACK400CAM,BLK

(874460,465) Color may vary.



1234 5678 9012 3456

CARDHOLDER NAME

**HOMEOWNED REWARDS®  
MEMBERS EARN**

# 5% BACK

IN HOMEOWNED REWARDS®

OR

**HOMEOWNED REWARDS®  
MEMBERS TAKE ADVANTAGE OF**

# SPECIAL FINANCING

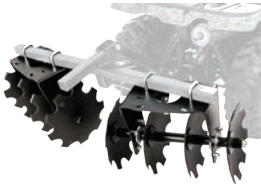
ON QUALIFYING PURCHASES\*





## BLACK BOAR™

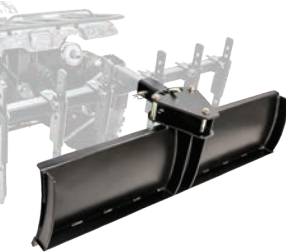
Chisel Plow  
#66003 (610665)



Disc Harrow  
#66001 (610645)



Landscape Rake  
#66002 (610650)



Scraper Blade  
#66005 (610655)

Cultipacker  
#66009 (610660)



Cultivator  
#66007 (735485)



Weight Basket  
#66006 (610670)



Gun/Tool Mount  
#66030 (735480)



Implement Lift  
#66013 (610640)



Not stocked in all stores. Available by special order.



FOOD PLOT



# DEER SUPPLEMENTS & TRAIL CAMERAS



## Trail Cameras

### Reveal X Gen 2.0 Cellular Trail Camera

Up to 16MP, multi-carrier capable #TA-TC-XG2 (866440)

### Reveal X Pro Cellular Trail Camera

Up to 16MP, built-in LCD screen, multi-carrier capable  
#TA-TC-XP2 (866445)

Reveal Lithium Battery #BAT-LBC-R (866455)

Reveal Solar Panel #EXT-V1 (866450)

### Moultrie® Edge Cellular Trail Camera

33MP, multi-carrier capable #MCG-14076 (874550)

### Stealth Cam® Fusion-X

### Cellular Trail Camera

36MP #STC-FXWT (880040)

### Muddy® Mitigator

### Cellular Trail Camera

24MP, multi-carrier capable

#MUD-MTGTR (880045)



**TACTACAM**

**MOULTRIE**



**STEALTH CAM**  
Digital Scouting Cameras

**MUDDY**

**LIVE. WORK. GROW.**

23



# HUNTING BLINDS & STANDS

## Rhino® Blinds

### 75™ Hunting Blind

Fits one hunter, 66" center height  
#R75-RTE (785790)



### 100™ Hunting Blind

Fits two hunters, 65" center height  
#RHINO-100 (657570)



### 150™ Hunting Blind

Holds three hunters,  
66" center height  
#R150 (760035)

### 180™ Hunting Blind

Holds three hunters,  
66" center height  
#R-180(791945)



## Ameristep®

### Ameristep®

#### Care Taker™ Run & Gun Blind

49.5"x49.5"x65", silent toggle windows, Durashell™ Plus fabric, 63" shooting width #AMS-AMEBL3031 (880050)



## Stands & Accessories

### Rhino® Basic Hang On Stand E

#RTH-050 (791925)

### Rhino® Basic Ladder Stand F

#RTL-050 (791935)

### Rhino® 1.5 Man Ladder Stand

#RTL-300 (791940)

### Rhino® 24' Climbing Stick H

RTSL-24 (791930)

### Hunting Swivel Chair I

#RC-009 (791960)

### Compact Folding Tripod Chair J

#RC-377 (791965)

### HS Dove® Chair with Back K

#HS-100152 (744815)





## Process

### .05HP Electric Big Bite Meat Grinder

#8, grinds 7 lbs. per minute #17791 (795865)

### Mighty Bite Meat Grinder

#8, grinds 4-5 lbs. per minute  
#1158 (795860)

### Mighty Bite Stuffer

5 lb. capacity #1606 (795790)

### Jerky Gun

Holds 3/4 lbs. of meat #555 (795785)

### Economy Meat Lug

21"x15"x5" #663 (795770)

### Casings

Hog, Sheep, Collagen, Fibrous  
Assorted sizes  
(795885-915)



## Prepare

### 7.5" Belt Driven Slicer

120v #1381 (795795)

### Cure

4 oz. #9208 (795950)

### Jerky Seasonings

5 lbs. (795930-945,955)

### Sausage Seasonings

5 lbs. (795960,965)



## Preserve

### Maxvac Vacuum Sealer 250

#1393 (795805)

### Mighty Bite Countertop Dehydrator

#1152 (795850)

### Vacuum Bags

11"x16", 28 count or 8"x12", 44 count (795825, 795830)

### Wild Game Bags

2 lb. 25 count #VV041 (795925)

### Hog Rings

500 count #816A (795880)

### Hog Ring Pliers

Spring loaded #816 (795875)



# WHITETAIL® HUNTING ACCESSORIES

## Whitetail® Hunting Accessories

We carry a great selection of hunting accessories -

- Binoculars and hunting packs
- Tree stand hooks, gear hangers and saws
- Hoists, processing kits and knives
- Shooting rests
- Rifle and pistol cases
- Ammo boxes



## 60 Gun Fireproof Safe

Holds 48 long guns and 12 pistols,  
digital lock with override key,  
fire rated for 45 minutes at 1200°F,  
60"Hx41"Wx25"D  
Black or Flat Dark Earth  
(793700, 879195)



**DARK EARTH COLOR  
COMING SOON**



## 42 Gun Fireproof Safe

Holds 30 long guns and 12 pistols,  
digital lock with override key,  
fire rated for 30 minutes at 1200°F,  
55"Hx29"Wx20"D  
Black or Flat Dark Earth  
(793695, 879190)



## 88 Gun Fireproof Safe

Holds 72 long guns and 16 pistols,  
digital lock with override key,  
fire rated for 45 minutes at 1200°F,  
72"Hx45"Wx28"D (793705)

*Available by special order in select locations.*

## 26 Gun Fireproof Safe

Holds 18 long guns and 8 pistols,  
digital lock with override key,  
fire rated for 30 minutes at 1200°F,  
55"Hx19"Wx20"D (793690)

## 18 Gun Fireproof Safe

Holds 14 long guns and 4 pistols,  
digital lock with override key,  
fire rated for 30 minutes at 1200°F,  
55"Hx20"Wx17"D (793685)



# SUMMIT™ TRACTORS

## Summit™ Tractors TX25H Compact Tractor with LX85 Front-End Loader

24.7 HP Mitsubishi® engine  
6.9 gallon fuel capacity  
4WD with differential lock  
Goodyear R14T 23x8.50-12 front tires  
Goodyear R14T 12-16.5 rear tires  
2-range hydrostatic transmission  
9.6 in. front axle (R14T tires)  
Front tow hook standard  
18 PTO HP, rear 540 RPM, mid 2100 RPM  
3,406 lb. (with loader and rimguard liquid tire ballast rear tires)  
Features rear hydraulic remotes  
3rd function diverter valve integrated with the loader joystick,  
Self-leveling loader, operator weight adjustable suspension seat  
#TX25HLX85 (864935)

*Available by special order in select locations.*

***"This tractor beats the snot out of  
the other tractors on the market!"  
- Good Works Tractors***



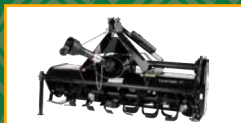
# SUMMIT™ TRACTORS



# FREE DELIVERY

**WITH PURCHASE OF 2 ATTACHMENTS\***

Standard delivery \$200 fee within  
15 miles of the store, \$3/mile beyond 15 miles



\*Within 15 miles of the store. Applicable attachments include Rotary Mowers, Tillers, Pallet Forks, Rear Blades, etc. Delivery not available in all regions. See Team Member for details.





(887890)

## SUMMIT™ WITH BACKHOE **COMING SOON!**

**SPECIAL  
FINANCING  
AVAILABLE\***

**HOME GROWN REWARDS®  
MEMBERS EARN**

**5% BACK**

WITH THE FAMILY FARM & HOME® CREDIT CARD

**No Interest if paid in full within 12 Months** On purchases made every day of \$399-\$998.99 made with your Family Farm & Home credit card. Interest will be charged to your account from the purchase date if the promotional balance is not paid in full within 12 Months. Minimum monthly payments required. Qualifying purchase amount must be on one receipt. Discounts may result in the qualifying purchase amount not being satisfied. Excludes gift cards. No interest will be charged on the promo balance if you pay it off in full, within the promo period. If you do not, interest will be charged on the promo balance from the purchase date. The required minimum monthly payments may or may not pay off the promo balance before the end of the promo period, depending on purchase amount, promo length and payment allocation. Regular account terms apply to non-promo purchases and, after promo period ends, to the promo balance. For new accounts: purchase APR is 29.99%; Minimum interest charge is \$2. Existing cardholders: See your credit card agreement terms. Subject to credit approval. We reserve the right to discontinue or alter the terms of this offer any time.



**FAMILY  
Farm & Home**  
Live. Work. Grow.

1234 5678 9012 3456

CARDHOLDER NAME

**LIVE. WORK. GROW.**

**29**

## TARTER®



### 5' Round Back Rotary Cutter

#RC205BL (655510)

6' Round Back Rotary Cutter #RC206BL (701395)

### 5' Rotary Tiller

#RT205BL (366625)

6' Rotary Tiller

#RT206BL (1430)

7' Rotary Tiller

#RT207BL (290680)



### 5' Box Blade #BB205BL (211516)

6' Box Blade #BB206BL (503524)

### 7' Box Frame Disc

#DH307BL (73615)

6' Angle Frame Disc

#DH206BL (211474)



### 6' Landscape Rake

#LR206BL (211508)

5' Landscape Rake

#LR205BL (968925)

7' Landscape Rake

#LR207BL (503557)

Wheel Kit

#LRWK (651240)



**6' Rear Grader Blade** #GB206BL (773143)

**5' Rear Grader Blade** #GB205BL (1445)

**7' Rear Grader Blade** #RC207BL (756759)

**36" Compact Disc**

#ATVCD (1440)



**Steel Cone Seeder** #FS20 (278374)

**Poly Cone Seeder** #PFS20 (329675)



**Cat I Quick Hitch**

#YTL019-064 (55160)

**Cat II Quick Hitch**

#YTL019-071 (92125)



## Sub Compact Implements

**4' Sub Compact Box Blade**

#BB104BL (92385)

**4' Sub Compact Rear Grader Blade**

#GB104BL (772020)

**4' Sub Compact Tiller**

#RT104BL (1470)

**4' Sub Compact Landscape Rake**

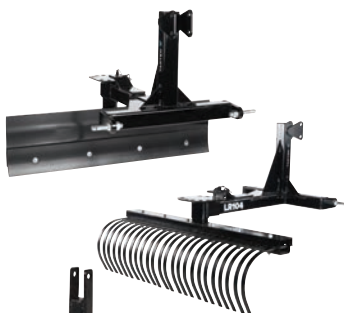
#LR104BL (772025)

**4' Sub Compact Middle Buster Sub Soiler**

#MBSS10BL (769695)

**4' Round Back Rotary Cutter**

#RC104BL (701390)





# LIVESTOCK DE-ICING & FEEDERS

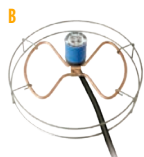
## Bucket & Stock Tank De-Icers

- 60 Watt Heated Plastic Bucket #FB-120 (33980) **A**  
 1500 Watt Sinking De-Icer #H-429 (22765) **B**  
 1500 Watt Universal Sinking De-Icer #UPH-15 (33960) **C**



## Heaters for Pets, Poultry & Rabbits

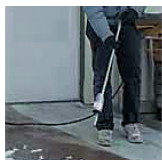
- 60 Watt Round Heated Pet Bowl #P-60 (46865) **D**  
 120 Watt Heated Base for Metal Fountains #HP-125 (46275) **E**  
 100 Watt Heated Plastic Poultry Fountain #HPF-100 (180230) **F**



**MANY OTHER MODELS  
AVAILABLE IN-STORE!**

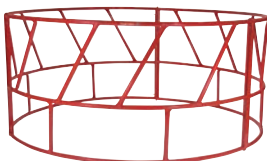
## Red Dragon® Torch Kit

500,000 BTU, uses 20 lb. propane tank  
 #500G (64380) *Propane tank not included.*



## Round Bale Feeders

- Economy 3-Piece #VLRBF (147435)  
 Heavy-Duty 2-Piece #14G20 (147480)  
 Heavy-Duty Sheeted #RFM (160325)  
 Galvanized Cradle #CBFG (635160)  
 3-Piece Horse #RHF (61175)



## Hay and Grain Feeders

- 38" Adjustable Height #AHGF (61170)  
 4' Sheep & Goat #DTSF (594240)  
 5' Galvanized Horse #GVSPF (631275)  
 7' Adjustable Height #76130108 (347090)

## Bunk Feeders

- 5' Galvanized #1PGHB5 (675610)  
 10' Bunk #1PEB10 (147445)  
 5' Low #1PGB5 (73920)  
 5' Hay Rack #HRS (675615)



**TARTER®** 

## Mineral Feeders

- 3-Tray #BMF-250 (590530)  
 Weathervane Feeder #TMF (666785)  
 Small Animal Mineral Feeder #GMF (702890)  
 Super Duty Mineral Feeder #SDMF (702895)  
 Small Bull Ground Mineral Feeder #SBMF (702905)







## 14 Gauge Welded Wire\*

36"x50' (711562) 48"x50' (711555)  
60"x50' (711548) 36"x100' (711524)  
48"x100' (711517) 60"x100' (711494)

## 12.5 Gauge Welded Wire\*

48"x100' (101345) 60"x100' (350280)

## Electric Fence Wire

14 gauge, 1/4 mile (718351)  
14 gauge, 1/2 mile (716626)  
17 gauge, 1/4 mile (750869)  
17 gauge, 1/2 mile (717200)

## High Tensile Fence

12.5 gauge, 2000' (T224996)  
12.5 gauge, 4000' (684415)

## Barbed Wire

High Strength 15.5 gauge, 1000' (786335)  
High Tensile 15.5 gauge, 1320' (567446)

## 14 Gauge Rabbit Guard

28"x50' (745885) 40"x50' (703849)

## Poultry Netting

1" hex mesh  
24"x25' (763977) 36"x25' (763985)  
48"x25' (763993) 24"x50' (718307)  
36"x50' (718316) 48"x50' (718325)  
24"x150' (718094) 72"x150' (718147)  
2" hex mesh 72"x150' (718192)

## 4'x50' Snow Fence

Wood (33050)  
Plastic (707299)

## 7'x100' Deer Netting

Standard (627765)  
Heavy Duty (734479)



## Field Fence

330' 939-6-12.5 (18720)  
330' 1047-6-12.5 (T181971)

## Horse Fence

48"x100' (969923)  
60"x100' (969931)

## Sheep and Goat Fence

4x4, 48"x330' (120320)

## Fence Panels

Cattle 50"x16' (925073)  
Hog 34"x16' (101071)  
Sheep & Goat 48"x16' (627750)  
Handy Panel 50"x8' (627745)

## Wire-Filled Gates

4' (44725) 6' (64030)  
8' (930511) 10' (930529)  
12' (930537) 14' (930503)

## 1-5/8" Utility Tube Gates

4' (687996) 6' (688002)  
8' (688010) 10' (587113)  
12' (587121) 14' (587139)  
16' (587147)

## 2" 16 Gauge

## Heavy Duty Gates

4' (956003) 6' (956011)  
8' (726091) 10' (18785)  
12' (726190) 14' (726216)  
16' (726224)

## Posts

T-Posts from 5' to 10'  
(101147,54,62,70,88,96)

## Treated Pine Posts

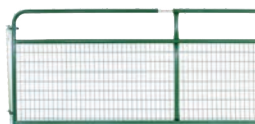
3.5-4"x8' (7200)  
4-5"x8' (7215)  
5-6"x8' (39850)

## 3 Point Post Hole Digger

CAT1 without Auger (392665)  
CAT0 without Auger (790220)

## Post Hole Augers

6" CAT1 Auger (776305)  
9" CAT1 Auger (96130)  
12" CAT1 Auger (297985)  
9" CAT0 Auger (790225)



\*Manufacturer may vary.



**LIVE. WORK. GROW.**